

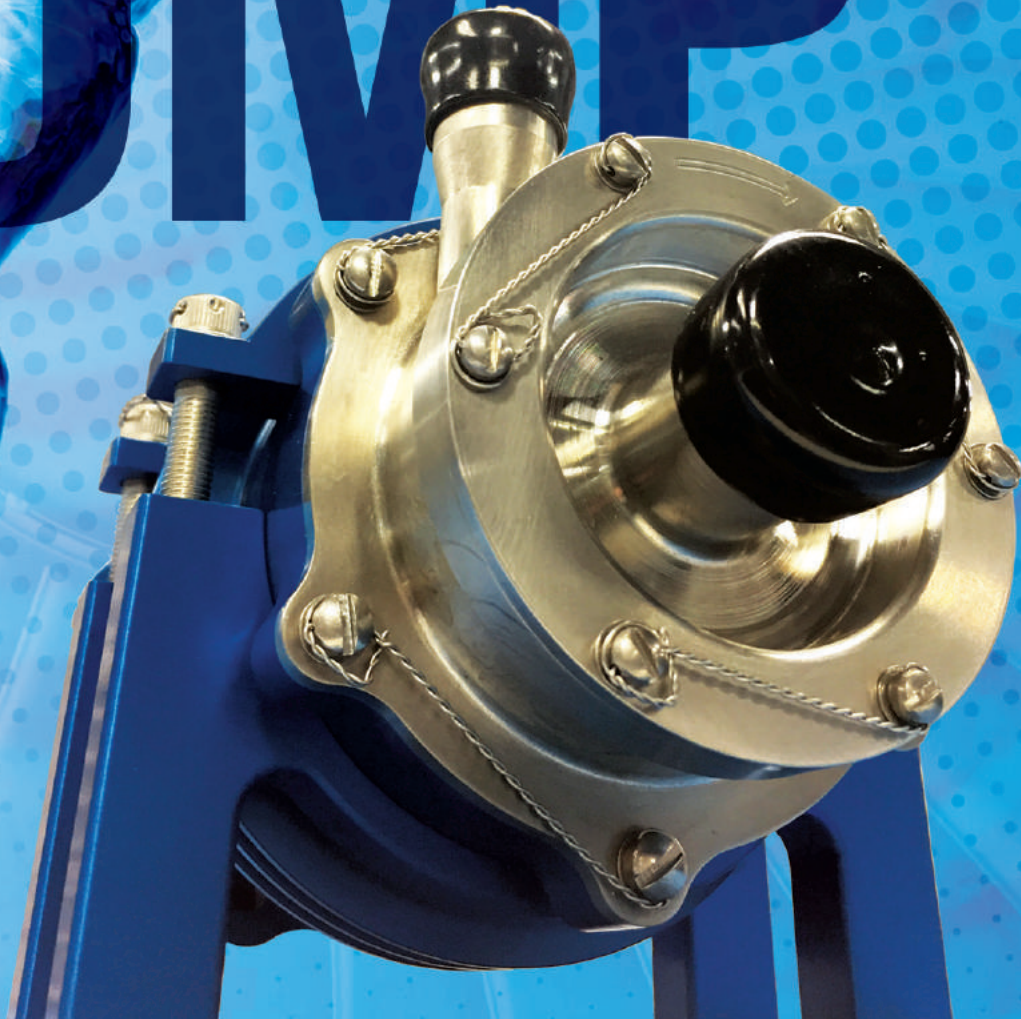


INTERNATIONAL
Water·Guard

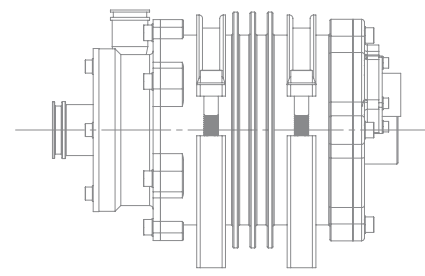
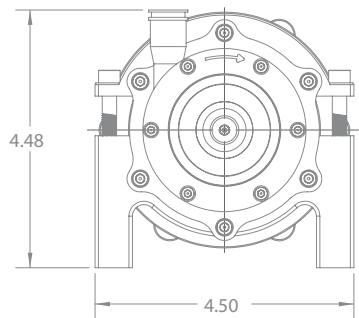
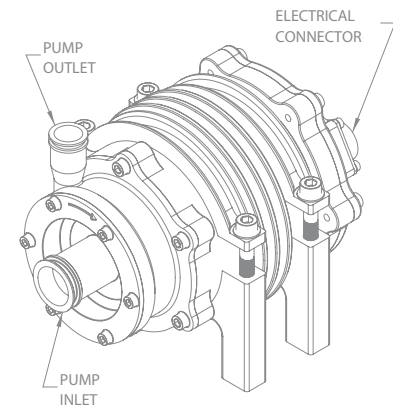
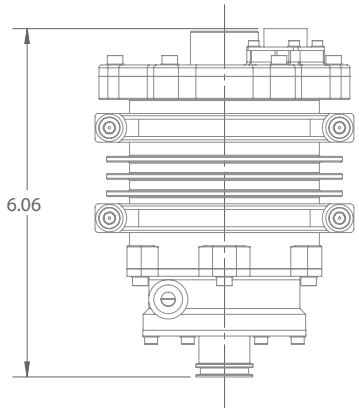
IWG CIRCULATION

IWG P/N 9-31001-01

PUMP



CIRCULATION
PUMP



FEATURES

- 3-Phase, 115 / 200 VAC
- 400 Hz
- Stainless steel construction
- Light weight
- 100,000 hour MTBF
- Capable of providing uniform system pressure at all operational altitudes

PHYSICAL

- Overall Dimensions:**
High: 4.5" (114 mm)
Wide: 4.44" (113 mm)
Deep: 6.06" (154 mm)
Net Weight (Dry): 6.75 lbs (3.1 kg)
- Electrical**
Input Voltage: 3-Phase, 115 VAC, 400 Hz
Nominal Current Draw: 1.5 A per phase
Electrical Interface: MIL-C-38999 Series II (27499E-T12-8P)

ENVIRONMENTAL

- All tests to DO-160D
- Ground Survival and Operating Low Temp:** 4.0, Cat A2, Similarity
 - Ground Survival and Operating High Temp:** 4.0, Cat A2, Similarity
 - Altitude:** 4.0, Cat A2, Similarity
 - Overpressure:** 4.0, Cat A2, Similarity
 - Humidity:** 6.0, Cat A, Similarity
 - Operational Shock:** 7.0, Cat B, Similarity
 - Vibration:** 8.0, Cat S, Curve C, Similarity
 - Power Input:** 16.0, Cat Z, Similarity
 - Voltage Spike:** 17.0, Cat A, Similarity
 - Emission of Radio Frequency Energy:** 21.0, Cat L, Analysis

Similarity Tests conducted on Pressure Pump (400Hz) P/N 9-3001-02

PRESSURE/FLOW

- Maximum Pressure/Flow:** 11 PSID @ 0 GPM
- Minimum Pressure/Flow:** 0 PSID @ 8 GPM
- Nominal Pressure:** 10 PSID @ 1 GPM

OVERHEAT PROTECTION

- The electrical windings are protected to prevent overheating
- Meets MIL-M-7969C and MIL-S-404 standards
- Thermal switch: Resettable
- Requires external control
- Thermal Fuse: Non-resettable

MAINTAINABILITY

- MTBF:** Predicted 185,873 operating hours
- Service Free Operation:** 15,000 operating hours

